

Haringey Crime Performance Overview

October 2018

Sources:

Except where noted, all data from Metropolitan Police Service (MPS) Website and MPS AWARE System, haringey.gov.uk and covers the period August 2016 to July 2018

Performance Overview



- The Mayor's Police and Crime Plan (2017-2021) has outlined key priorities for Haringey:

Mandatory High Harm Crimes:

- Sexual Violence
- Domestic Abuse
- Child Sexual Exploitation
- Weapon-Based Crime
- Hate Crime

Mandatory Volume Crime:

- Anti-Social Behaviour

Local Priorities:

- Robbery
- Non-Domestic Violence with Injury (VWI)

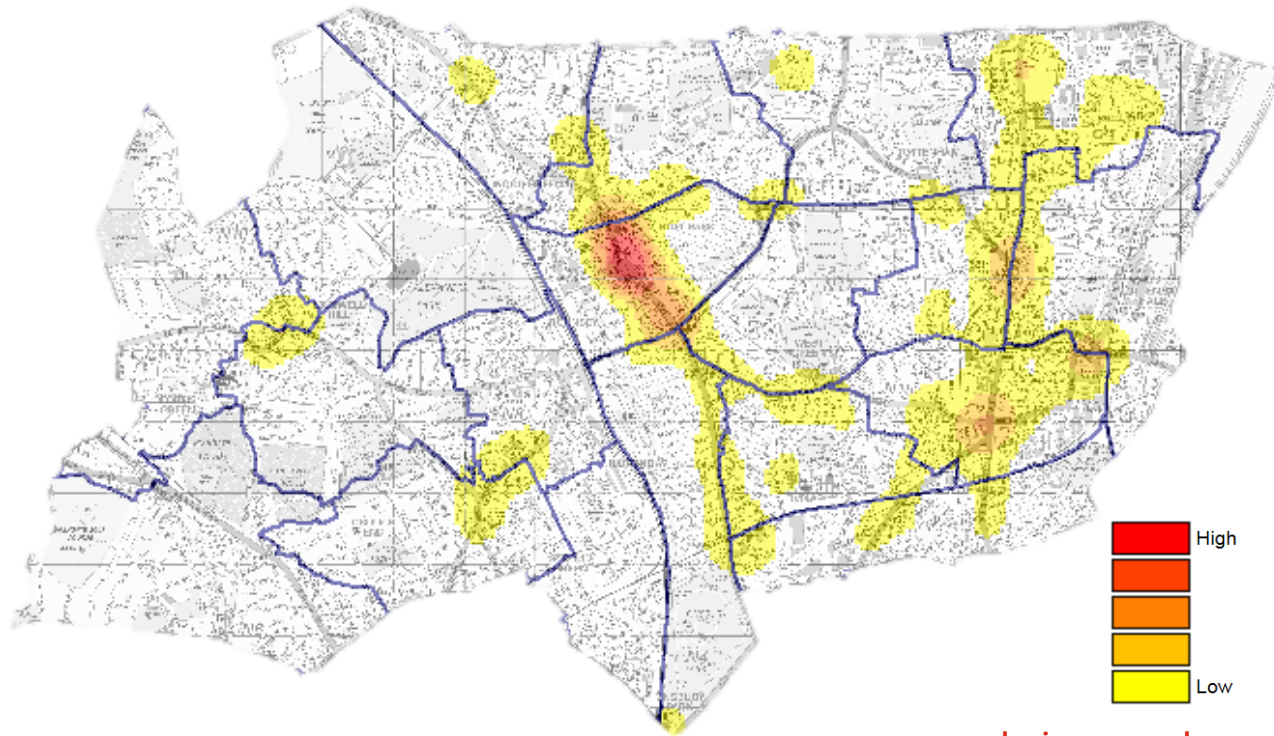
- Key focus on Violence, Vulnerability and Exploitation, whilst balancing response to volume crime
- Ranking tables show Haringey in the London context (No.1 indicates best performing borough)

Total Notifiable Offences

Borough	TNO	London Rank	Volume
Hackney	-5.4%	1	29985
Ealing	-1.1%	2	27930
Islington	-1.1%	3	30004
Croydon	-0.1%	4	30520
Greenwich	0.7%	5	25092
Merton	1.2%	6	13652
Lambeth	1.2%	7	35342
Tower Hamlets	1.5%	8	32466
Lewisham	1.8%	9	25312
Harrow	2.1%	10	14159
Barking and Dagenham	2.4%	11	18407
Richmond upon Thames	2.4%	12	12792
Sutton	2.8%	13	11919
Kensington and Chelsea	2.9%	14	21801
Bromley	2.9%	15	22810
Hillingdon	3.0%	16	24801
Waltham Forest	3.5%	17	22907
Barnet	4.1%	18	27518
Wandsworth	4.4%	19	26169
Havering	4.4%	20	18856
Hounslow	5.1%	21	25347
Hammersmith and Fulham	5.5%	22	22097
Haringey	5.7%	23	31114
Southwark	5.9%	24	35071
Bexley	6.2%	25	15080
Newham	6.8%	26	35610
Brent	8.2%	27	30818
Kingston upon Thames	8.3%	28	11842
Westminster	8.7%	29	59027
Camden	9.0%	30	37300
Redbridge	9.6%	31	23846
Enfield	10.6%	32	26775
London Total	3.9%		826369

Overall recorded crime in Haringey has increased by 6% in the 12 months to July 2018, compared to a London wide average increase of 4%.

The main hotspots are located around Wood Green High Road and around the A10 corridor, from Bruce Grove to Seven Sisters.



Hate Crime



- There has been a London wide trend of decreased reports of most hate crime categories over the past year.
- Haringey has experienced an increase of 56% in anti-Semitic hate crime reports, a 35% increase in disability hate crime reports and a 36% increase in homophobic hate crime reports in the 12 months to July.
- Reductions have been recorded in the volume of hate crime reports for all other categories in Haringey.

	Haringey August 2016 – July 2017	Haringey August 2017 – July 2018	Haringey Change %	London Change %
Anti-Semitic Hate Crime	25	39	56%	-2%
Disability Hate Crime	20	27	35%	-22%
Faith Hate Crime	105	94	-10%	-10%
Homophobic Hate Crime	72	98	36%	11%
Islamophobic Hate Crime	62	48	-23%	-17%
Racist & Religious Hate Crime	690	663	-4%	-6%
Transgender Hate Crime	7	6	-14%	-5%

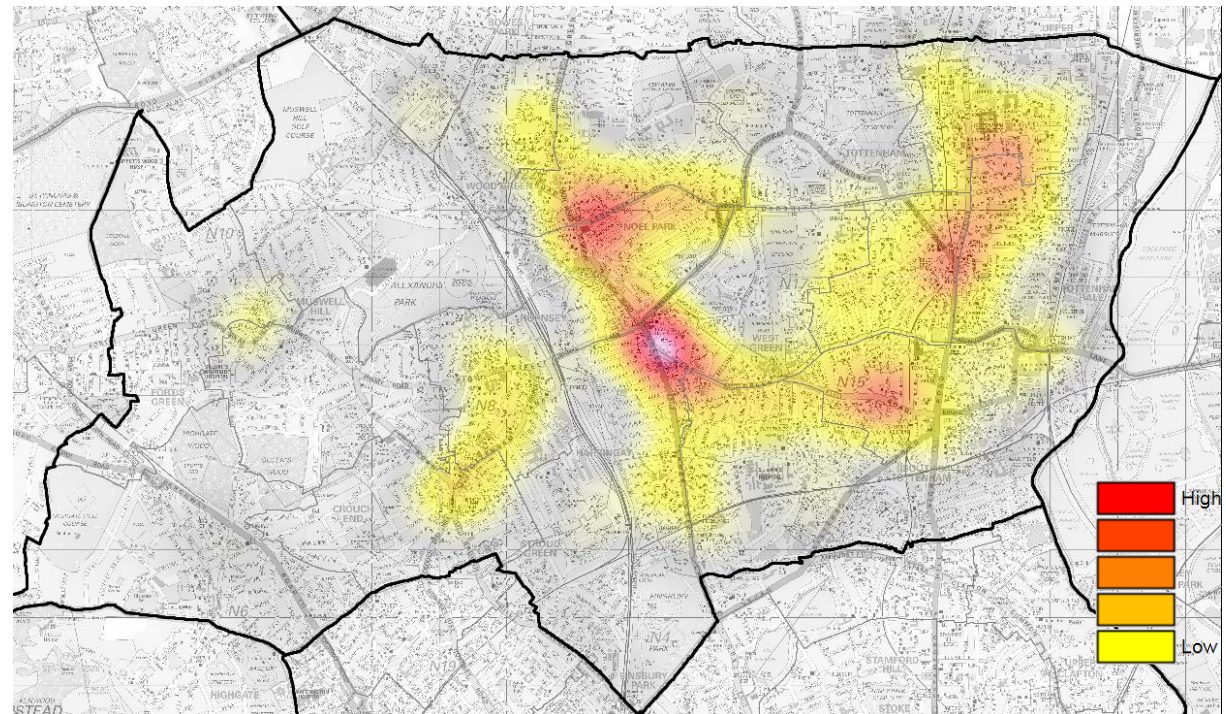
Domestic Abuse Violence with Injury

Borough	Domestic Abuse VWI	London Rank	Volume
Lewisham	-10.3%	1	967
Tower Hamlets	-9.0%	2	810
Hackney	-8.6%	3	757
Bromley	-8.4%	4	760
Croydon	-7.9%	5	1219
Bexley	-5.6%	6	552
Hammersmith and Fulham	-4.9%	7	488
Lambeth	-4.7%	8	921
Havering	-4.1%	9	677
Waltham Forest	-4.0%	10	745
Hounslow	-4.0%	11	869
Barnet	-3.4%	12	764
Kensington and Chelsea	-2.3%	13	342
Redbridge	-2.2%	14	655
Richmond upon Thames	-1.1%	15	350
Brent	-0.4%	16	933
Kingston upon Thames	-0.3%	17	318
Harrow	-0.2%	18	508
Hillingdon	1.4%	19	770
Merton	1.5%	20	484
Haringey	2.5%	21	993
Westminster	2.8%	22	586
Ealing	4.2%	23	951
Enfield	4.4%	24	926
Greenwich	4.5%	25	1013
Barking and Dagenham	6.9%	26	821
Newham	7.1%	27	1084
Islington	8.9%	28	707
Sutton	9.6%	29	493
Southwark	12.6%	30	1109
Wandsworth	14.5%	31	757
Camden	15.0%	32	597
London Total	0.0%		23926

- Domestic Abuse VWI in Haringey has increased by 2.5% in the 12 months to July 2018, compared to a London wide offending pattern that has remained stable.

- Offending takes place primarily in residential locations, with hotspots in Turnpike Lane, Wood Green and Bruce Grove.

- Over two-thirds of all reported Domestic Abuse VWI occurs to the East of the borough.



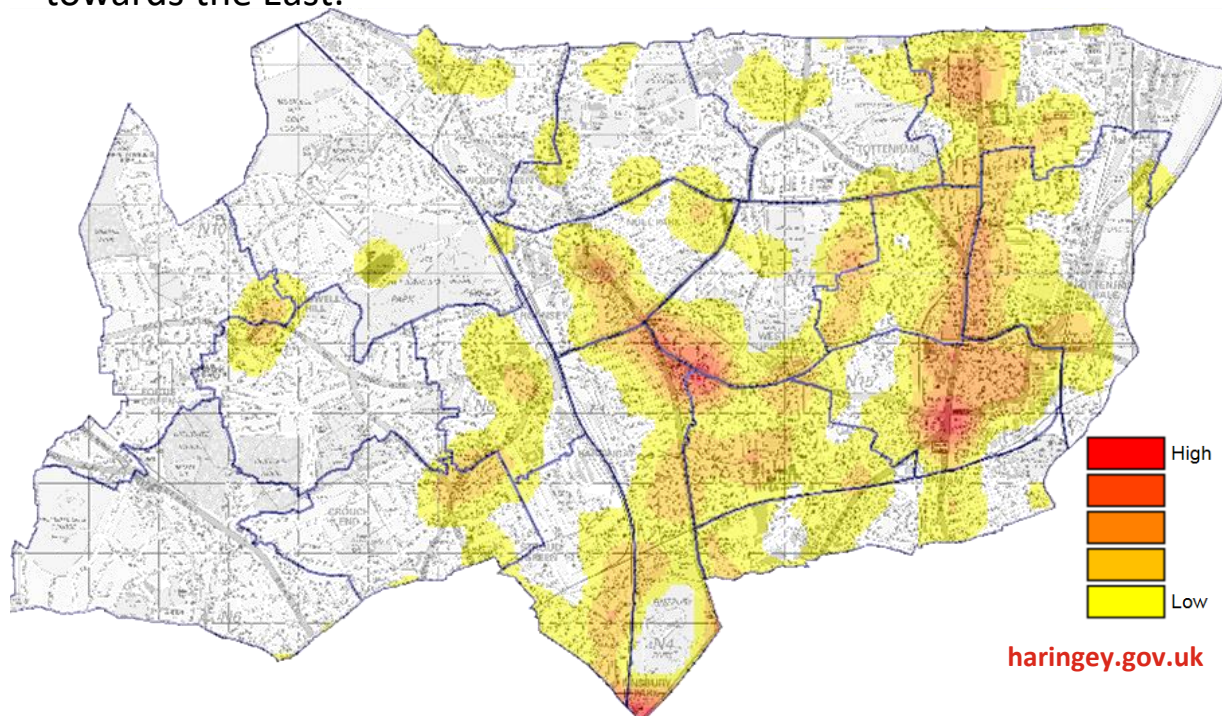
Sexual Offences

Borough	Sexual Offences	London Rank	Volume
Richmond upon Thames	-16.3%	1	293
Hammersmith and Fulham	-7.6%	2	435
Sutton	-6.9%	3	339
Hounslow	-3.9%	4	560
Lewisham	-3.5%	5	696
Bexley	-2.7%	6	403
Harrow	-0.3%	7	341
Redbridge	1.4%	8	563
Waltham Forest	2.9%	9	567
Hillingdon	3.3%	10	561
Croydon	5.6%	11	904
Wandsworth	8.0%	12	753
Hackney	8.4%	13	814
Barking and Dagenham	8.4%	14	514
Kensington and Chelsea	8.8%	15	395
Barnet	8.9%	16	662
Lambeth	11.2%	17	981
Enfield	11.6%	18	654
Brent	12.3%	19	729
Islington	13.1%	20	674
Ealing	13.4%	21	660
Greenwich	15.0%	22	730
Merton	15.1%	23	358
Camden	15.2%	24	772
Southwark	16.4%	25	922
Kingston upon Thames	16.6%	26	338
Tower Hamlets	19.2%	27	802
Bromley	20.4%	28	590
Havering	21.1%	29	483
Haringey	23.4%	30	769
Newham	26.0%	31	956
Westminster	31.7%	32	1254
London Total	10.5%		20472

Overall sexual offences in Haringey have increased by 23% in the 12 months to July 18, compared to a London wide average increase of 11%.

44% of sexual offences in Haringey are categorised in the most serious category of rape, which is slightly above the London wide average of 40%.

Offences are spread across entire borough, with more clustering towards the East.



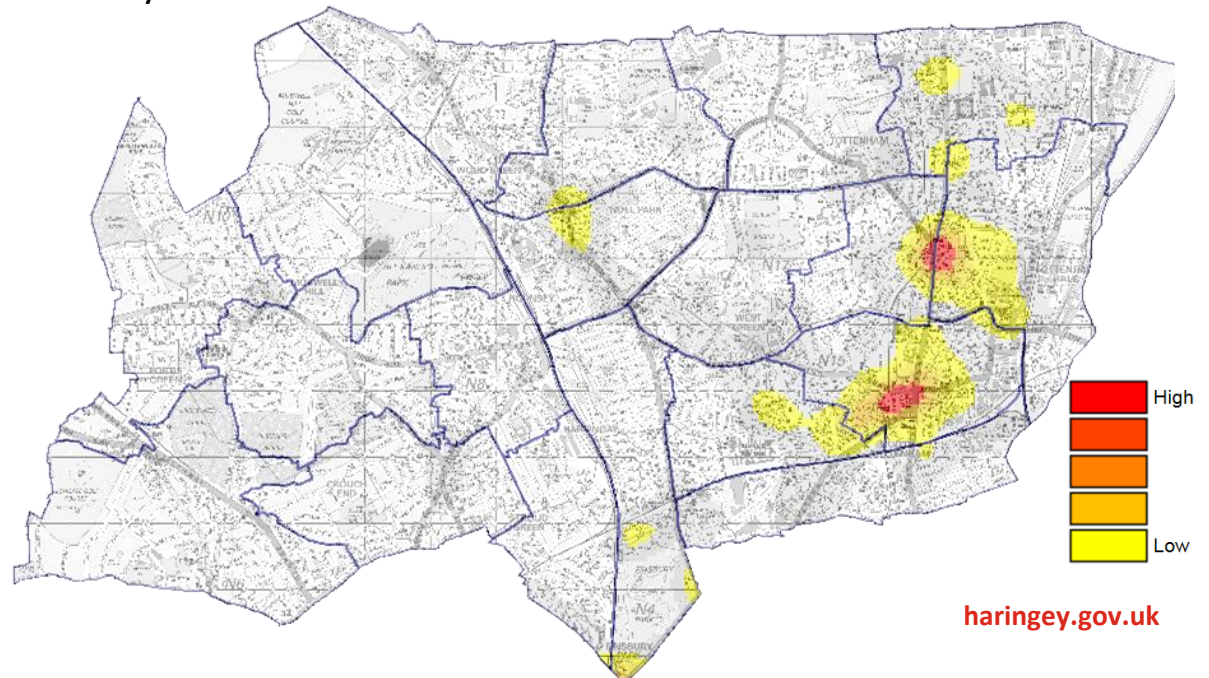
Personal Robbery

Borough	Personal Robbery	London Rank	Volume
Harrow	-19.6%	1	267
Croydon	-16.2%	2	1027
Bromley	-3.8%	3	475
Hackney	-2.9%	4	1308
Merton	8.1%	5	333
Tower Hamlets	10.0%	6	1474
Newham	11.0%	7	1910
Lewisham	11.2%	8	956
Southwark	11.9%	9	1662
Kensington and Chelsea	12.9%	10	665
Hillingdon	13.1%	11	501
Greenwich	13.3%	12	572
Enfield	15.3%	13	1058
Haringey	21.4%	14	1797
Westminster	21.7%	15	2543
Lambeth	21.9%	16	1501
Ealing	28.7%	17	826
Barnet	29.4%	18	665
Redbridge	32.0%	19	937
Bexley	32.5%	20	281
Barking and Dagenham	34.3%	21	830
Havering	38.0%	22	574
Hounslow	38.1%	23	547
Wandsworth	40.2%	24	833
Hammersmith and Fulham	41.3%	25	667
Kingston upon Thames	41.7%	26	197
Waltham Forest	44.2%	27	936
Sutton	46.2%	28	291
Islington	51.5%	29	1788
Camden	52.9%	30	1969
Brent	73.4%	31	1458
Richmond upon Thames	95.1%	32	281
London Total	22.6%		31129

- Personal robbery has increased significantly in Haringey, by 21%, which is over 250 extra offences per year. London wide offending has also worsened, experiencing an increase of 23%.

- Robbery of mobile phones has seen an increase of 8% in Haringey (620 in 12 months), compared to a London increase in this same category of 19%.

- Moped enabled robbery volumes have reduced in recent months. The highest volumes have taken place in Islington, Camden and Hackney.



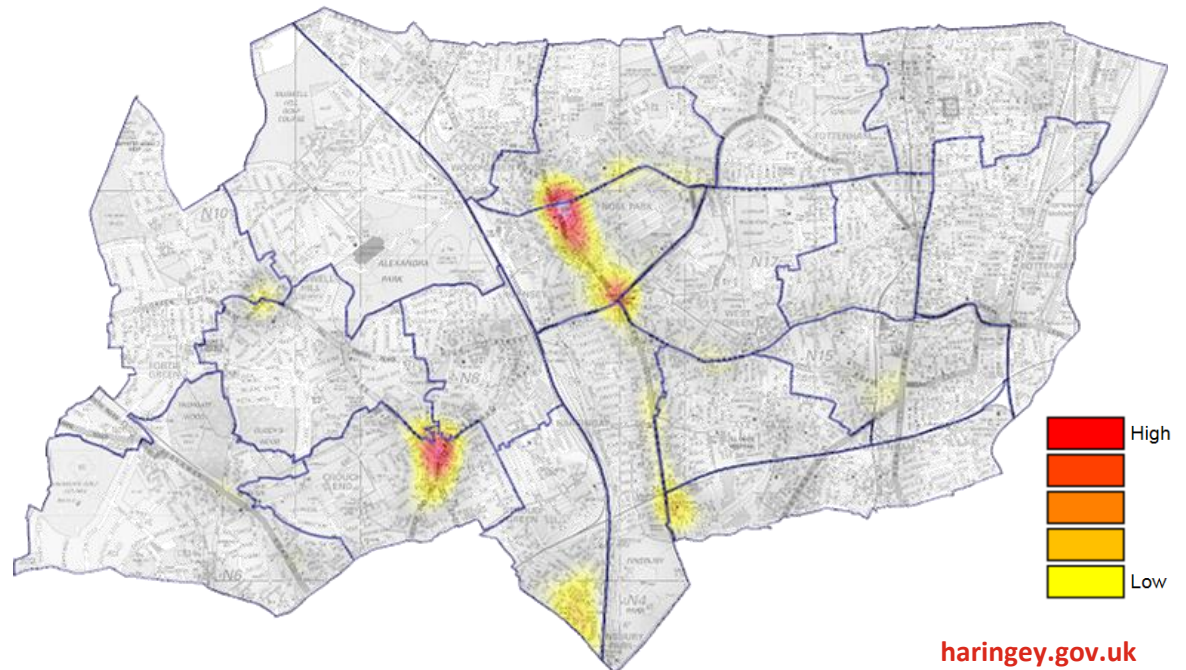
Moped Enabled Crime

Borough	Moped Crime	London Rank	Volume
Hackney	-57.0%	1	906
Newham	-51.1%	2	64
Islington	-39.5%	3	2281
Tower Hamlets	-36.0%	4	521
Westminster	-35.9%	5	1340
Southwark	-30.4%	6	398
Kensington & Chelsea	-28.9%	7	251
Waltham Forest	-22.3%	8	87
Haringey	-21.3%	9	877
Enfield	-11.1%	10	72
Camden	-8.3%	11	3538
Lewisham	4.5%	12	93
Croydon	6.2%	13	224
Redbridge	16.9%	14	69
Lambeth	20.3%	15	261
Havering	21.6%	16	45
Hounslow	31.8%	17	29
Bromley	43.5%	18	66
Barnet	50.0%	19	87
Hammersmith & Fulham	50.0%	20	81
Barking & Dagenham	58.0%	21	79
Merton	72.1%	22	105
Richmond upon Thames	76.2%	23	37
Ealing	78.1%	24	57
Greenwich	108.3%	25	75
Wandsworth	141.2%	26	275
Bexley	222.2%	27	29
Hillingdon	280.0%	28	19
Brent	339.3%	29	246
Sutton	438.9%	30	97
Kingston upon Thames	533.3%	31	19
Harrow	900.0%	32	10
London Total	-23.8%		12338

■ Moped enabled crime in Haringey has reduced by 21% in the 12 months to August 2018. London wide offending has also improved, experiencing a reduction of 23%.

■ Within Haringey, key moped crime hotspots are centred around Wood Green High Road, Crouch End and Stroud Green Road.

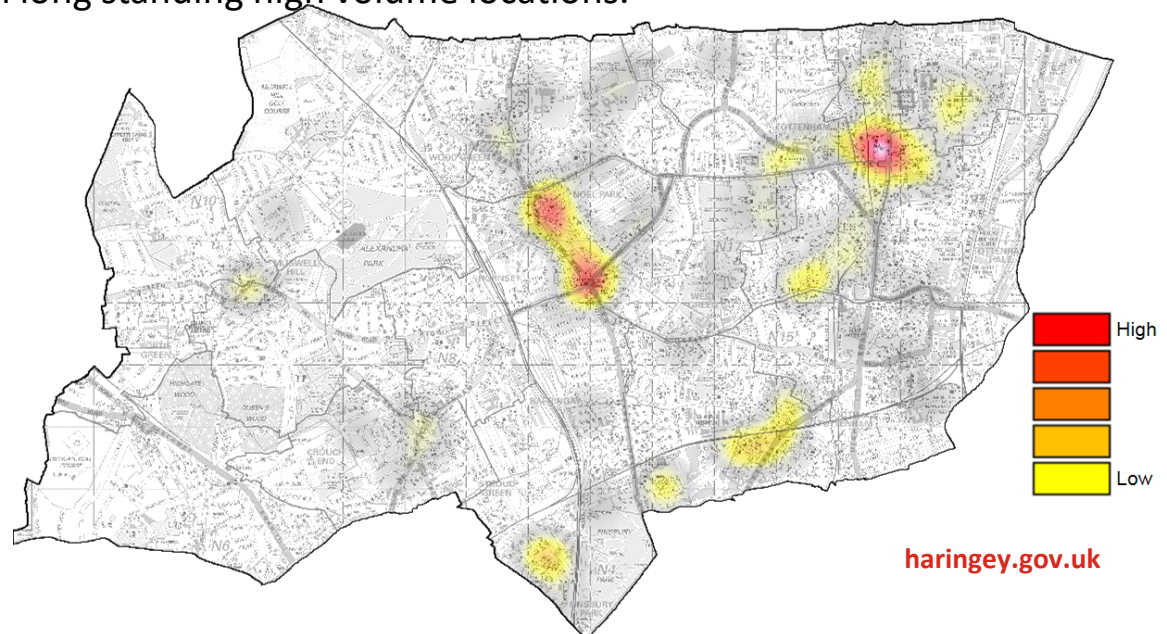
■ The highest volume of moped crime has continued to occur around North London, particularly Camden, Islington and Hackney, as well as Westminster.



Knife Injury Victims

Borough	Knife Injury Victims	London Rank	Volume
Richmond upon Thames	-29.3%	1	29
Barking and Dagenham	-22.8%	2	105
Bexley	-17.2%	3	53
Sutton	-14.3%	4	48
Redbridge	-14.2%	5	127
Southwark	-13.6%	6	267
Hounslow	-13.2%	7	118
Haringey	-13.1%	8	192
Newham	-11.3%	9	220
Merton	-10.5%	10	51
Hackney	-10.1%	11	186
Barnet	-6.0%	12	109
Bromley	-5.9%	13	96
Croydon	-5.7%	14	197
Harrow	-5.7%	15	100
Islington	-5.6%	16	168
Lewisham	-4.0%	17	192
Lambeth	-1.4%	18	273
Brent	0.4%	19	231
Enfield	5.2%	20	183
Ealing	7.6%	21	169
Westminster	8.5%	22	179
Waltham Forest	8.5%	23	166
Kingston upon Thames	12.8%	24	44
Tower Hamlets	15.5%	25	246
Wandsworth	16.4%	26	128
Kensington and Chelsea	17.1%	27	96
Havering	17.4%	28	101
Camden	17.9%	29	178
Greenwich	19.2%	30	180
Hammersmith and Fulham	21.7%	31	101
Hillingdon	25.4%	32	148
London Total	-0.9%		4681

- The volume of overall knife injuries has reduced by 13% in Haringey, compared to a 1% London-wide reduction.
- Haringey has experienced a reduction in young victims of knife injuries, reducing by **-23%**. During this period, London overall has increased by 1%.
- **However, serious incidents still occur, which often lead to serious and life-changing injuries.**
- Key locations are Wood Green High Street, Turnpike Lane and Bruce Grove
- Hotspots have continued to shift, following targeted partnership work in long standing high volume locations.



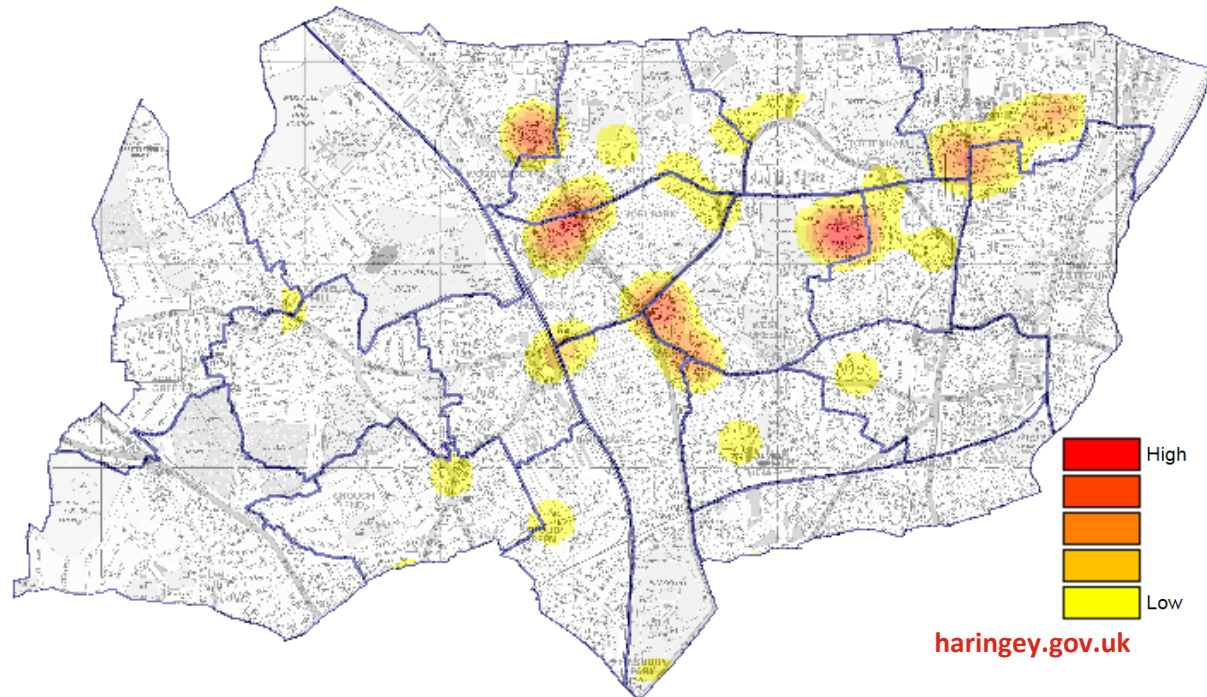
Lethal Barrelled Firearm Discharges

Borough	Lethal Barrelled Firearm Discharges	London Rank	Volume
Hammersmith and Fulham	-100.0%	1	0
Richmond upon Thames	-75.0%	2	1
Enfield	-63.6%	3	8
Hounslow	-62.5%	4	3
Redbridge	-60.0%	5	4
Kingston upon Thames	-50.0%	6	1
Camden	-41.7%	7	7
Havering	-37.5%	8	5
Westminster	-36.4%	9	7
Barnet	-33.3%	10	2
Kensington and Chelsea	-28.6%	11	5
Newham	-19.5%	12	33
Islington	-11.1%	13	8
Bromley	0.0%	14	4
Sutton	0.0%	15	3
Greenwich	10.0%	16	11
Barking and Dagenham	12.5%	17	9
Haringey	15.2%	18	38
Hackney	17.4%	19	27
Lambeth	50.0%	20	39
Wandsworth	50.0%	21	6
Croydon	63.6%	22	18
Southwark	69.2%	23	22
Waltham Forest	73.3%	24	26
Hillingdon	80.0%	25	9
Lewisham	83.3%	26	11
Tower Hamlets	85.7%	27	13
Brent	87.5%	28	30
Bexley	150.0%	29	10
Harrow	150.0%	30	10
Merton	200.0%	31	6
Ealing	250.0%	32	7
London Total	17.9%		383

■ Lethal barrelled firearm discharges in Haringey have increased year on year to August 2018 by 15%. London has increased by 18% over this same period.

■ Haringey accounts for **1 in 10** of all lethal barrelled firearm discharges in London.

■ Firearm related incidents mostly occur to the East of the borough, and show some correlation with known gang linked areas. Offences also demonstrate some geographical clustering.



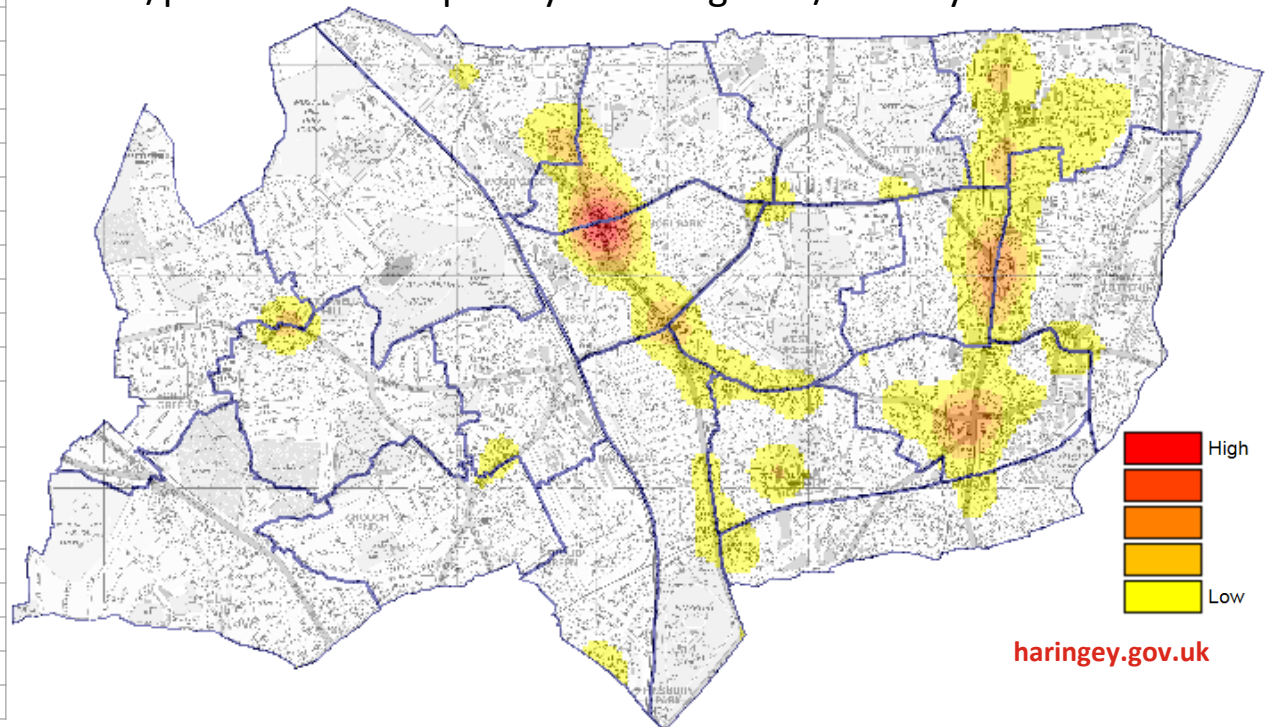
Non-Domestic Abuse Violence With Injury

Borough	Non-Domestic Abuse VWI	London Rank	Volume
Waltham Forest	-12.3%	1	1387
Barnet	-8.0%	2	1384
Sutton	-5.8%	3	821
Bromley	-5.7%	4	1391
Lambeth	-5.1%	5	2596
Newham	-2.6%	6	2198
Greenwich	-2.3%	7	1764
Brent	-1.3%	8	2225
Lewisham	-0.6%	9	1895
Merton	-0.5%	10	880
Westminster	-0.2%	11	2915
Tower Hamlets	0.8%	12	2008
Kensington and Chelsea	0.8%	13	1041
Enfield	1.5%	14	1583
Hounslow	2.8%	15	1628
Redbridge	2.9%	16	1448
Havering	3.1%	17	1336
Hackney	3.2%	18	2097
Bexley	3.2%	19	1059
Haringey	3.7%	20	2091
Ealing	3.7%	21	2024
Kingston upon Thames	3.7%	22	837
Harrow	3.7%	23	916
Barking and Dagenham	4.9%	24	1349
Hammersmith and Fulham	5.1%	25	1309
Richmond upon Thames	5.2%	26	646
Camden	5.5%	27	2009
Croydon	5.7%	28	2285
Hillingdon	5.8%	29	1716
Southwark	6.1%	30	2321
Islington	7.6%	31	1781
Wandsworth	7.9%	32	1613
London Total	1.1%		52553

■ Non-domestic VWI offences have increased in Haringey by 4%, which is larger than the London-wide increase of 1%.

■ A significant proportion of incidents occur in busy locations, such as shopping centres, transport hubs and key thoroughfares.

■ Some incidents are also linked to retail/night time economy related issues, including when individuals have been refused entry to shops or bars/pubs and subsequently attacking staff/security.



Summary

- Several areas of positive performance

- Current MOPAC Police and Crime Plan priorities (Robbery and Non-DA VWI) continue to be high-volume and high risk

- Challenges include :
 - Responding to Robbery and Weapon Enabled Crime

 - Continuing to tackle vulnerability, including Domestic Abuse and Youth Violence